

Don't miss your chance to pick a plan



[Plan Highlights](#)

[Doctors and Hospitals](#)

[Health and Wellbeing](#)

[Tools and Resources](#)

Have You Enrolled Yet?

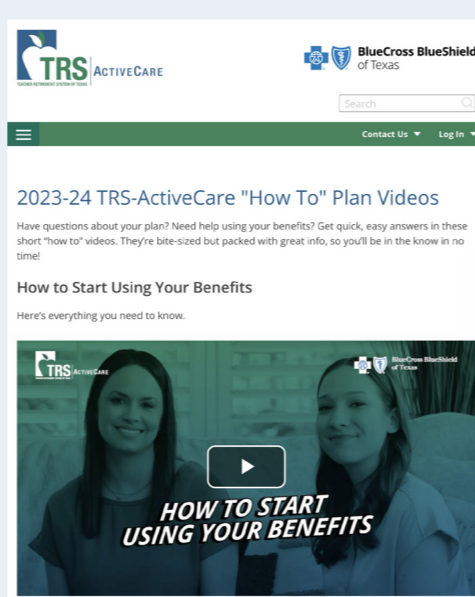
[Pick Your Plan](#)



If you haven't picked your TRS-ActiveCare plan, now's the time!

Remember, if you like your plan, you don't have to do anything.

If you're not sure, the Annual Enrollment videos are a great place to start. These bite-sized, "how-to" videos can help you choose the right plan and get the most out of your coverage.



If you haven't picked your TRS-ActiveCare plan, now's the time!

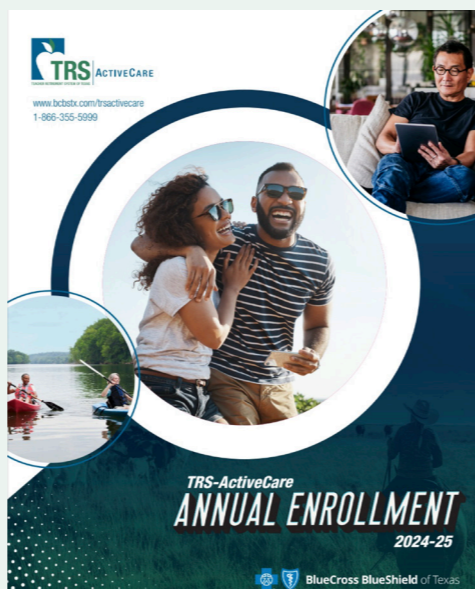
Remember, if you like your plan, you don't have to do anything.

If you're not sure, the Annual Enrollment videos are a great place to start. These bite-

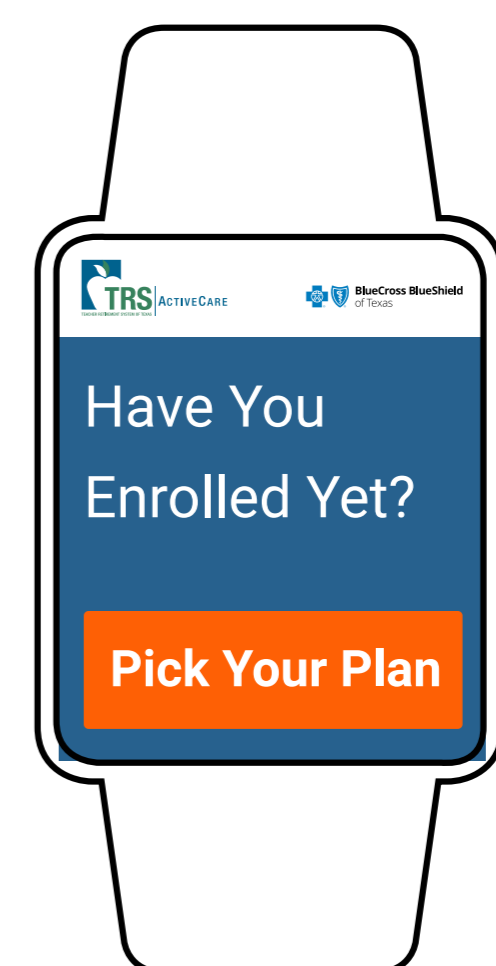
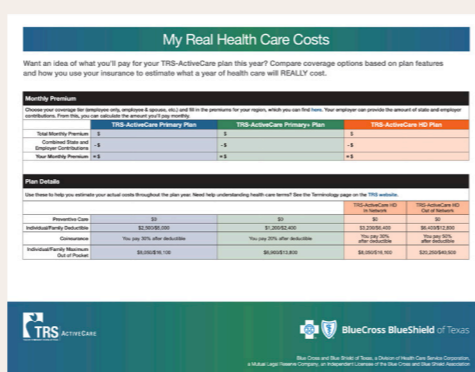


There are three TRS-ActiveCare plans open for enrollment for the 2024-25 plan year: TRS-ActiveCare Primary, TRS-ActiveCare Primary+ and TRS-ActiveCare HD.

Read the [Annual Enrollment Guide](#) to get more details about each health plan, wellness benefits and other important information.



Use the [Health Care Costs Worksheet](#) to help you compare coverage options based on plan features and how you use your insurance to estimate what a year of health care will REALLY cost.



Need Help Picking a Plan?

Connect with a plan expert 24/7 who can help guide you. Call a Personal Health Guide at [1-866-355-5999](tel:1-866-355-5999) or chat in the [BCBSTX App](#).

[Pick Your Plan](#)

www.bcbstx.com/trsactivecare



Blue Cross and Blue Shield of Texas, a Division of Health Care Service Corporation, a Mutual Legal Reserve Company, an Independent Licensee of the Blue Cross and Blue Shield Association

1001 E. Lookout Drive, Richardson, TX 75082

© Copyright 2024 Health Care Service Corporation. All Rights Reserved.

[Legal and Privacy](#) | [Non-Discrimination Notice](#) | [Language Assistance](#) | [Update Your Preferences](#) | [Unsubscribe](#)

[View in Web Browser](#)